





MASTER OF STONE

In April 2021, Caesarstone launched its very first [Master of Stone Training Centre](#). The purpose of the training centre was to provide health and safety information for

- Fabrication shops owners
- Fabrication shops managers
- Fabrication shops workers at all workstations
- Installers
- New workers
- Experienced workers
- Caesarstone managers and employees

Our Training Centre contains several short, simple, user-friendly modules that anyone can complete conveniently from their desktop or phone.

A Message From Our MD

Welcome to the first edition of Caesarstone Australia's Industry newsletter providing our customers with an in depth insight to industry health and safety matters nationally.

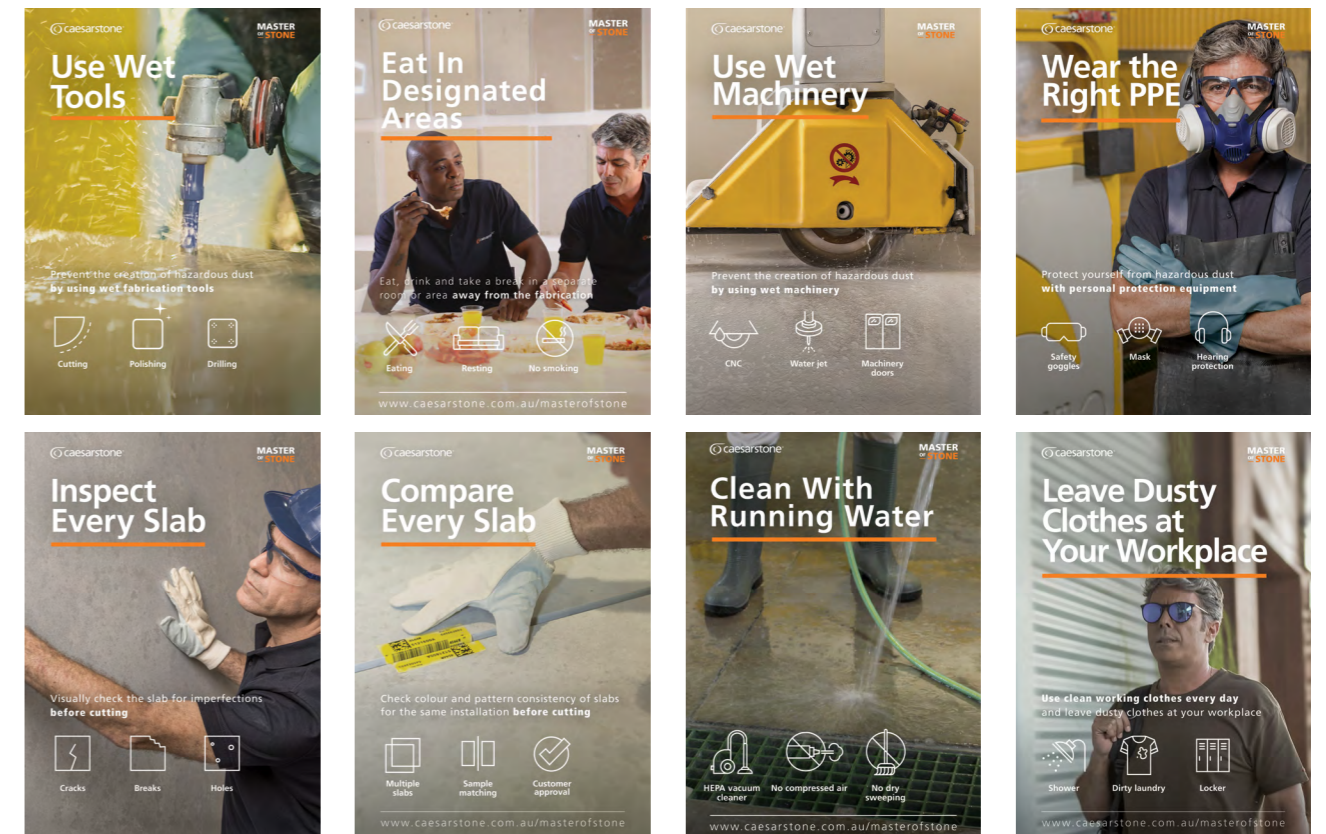
In 2021 after much collaboration with fabricators around the country we recognised an opportunity to partner directly with industry workers.

At Caesarstone we continue to review ways to help ensure those who work in our industry have the relevant training and information to allow them to safely work with engineered stone.

In the last two years there has been a lot of attention on the engineered benchtop industry, and we have worked closely with our local and international counterparts to continuously develop safer products, fabrication guidelines, education and safety information available to all workers in the engineered stone benchtop industry.

Caesarstone continue to invest in Health and Safety related matters and as such we have expanded our team of safety resources to collaborate and keep you updated on relevant industry related safety information as well as Caesarstone safety information.

David Cullen
Managing Director
Caesarstone Australasia



Advantages of the Training Centre

An innovative, unique, online learning platform, dedicated to making safety and professional working guidelines accessible to fabricators worldwide.

- Promoting health and safety within our industry. Well informed workers are much more likely to adhere to health & safety guidelines;
- Fulfilling the employers duty according to local regulation to train his workers and recording it for future inspections;
- Available in 10 languages;
- Boosts the sense of pride and professional among sector workers.

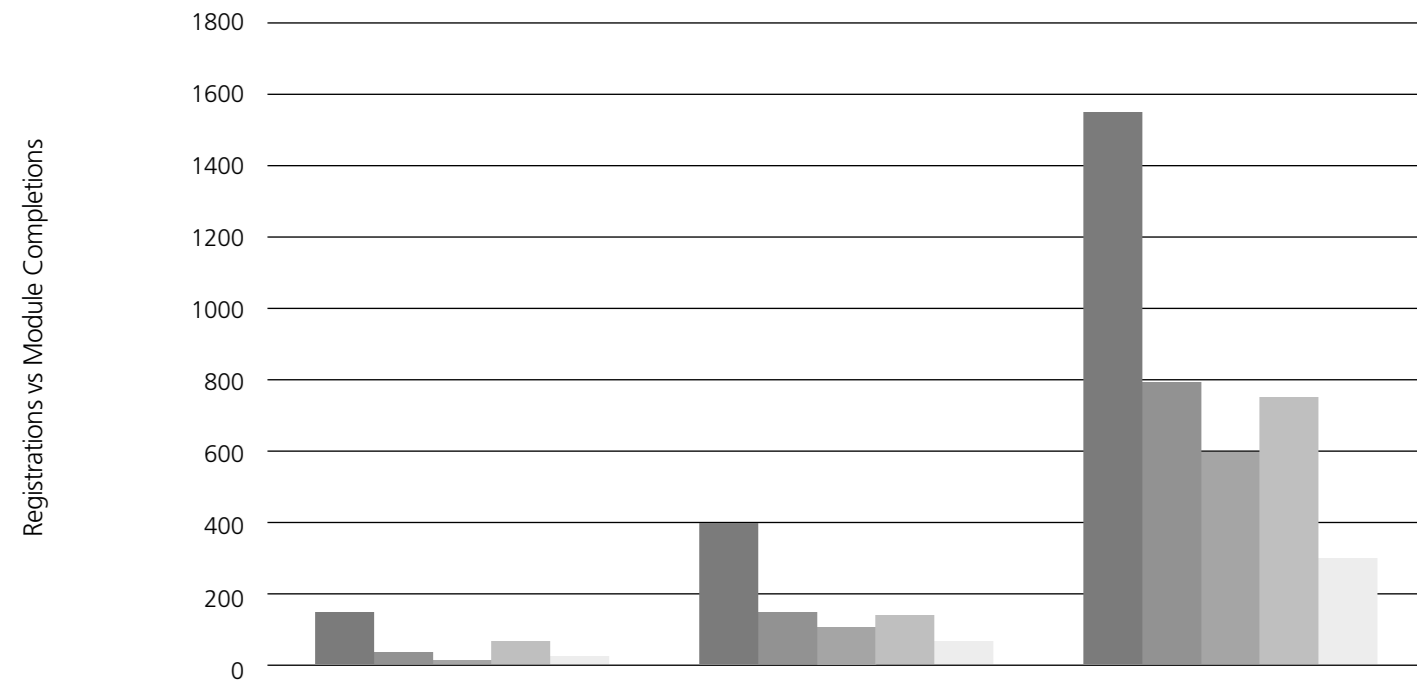
[Click here](#)
to sign up to
complete the
Master of Stone
program.

The Master of Stone Training Centre was developed with the intention of providing fabricators of engineered stone a platform to seek relevant health and safety resources. The successful launch of Master of Stone® provided Caesarstone an opportunity to share an industry pioneering concept of communication and training to support our fabricators. Since the launch of the program each state continues to actively participate in the training centre. As of December 31, 2021, the number of fabricators who have participated in the online training continues to increase daily.

National participation rates for the Master of Stone® program currently stand at

- Fabricator businesses registered to complete Master of Stone = **295**
- Individual industry employees registered with the program = **889**
- Modules completed = **4,036**

Individual Registrations & Completion Rates by State



	Fabricator Shop Registrations	Individual Registrations	Actual Modules Completed
■ NSW & ACT	158	398	1157
■ Queensland	38	148	805
■ South Australia	17	118	601
■ Victoria	62	152	759
■ Western Australia	20	73	314

Account Testimonials

“We really appreciated Kim’s time, energy, knowledge and support around the well being of the industry moving forward into the future.

We have hoped that someone in the industry would step up, support us and provide a voice that the industry will listen to.”

Armando Paradiso
Director, Uniq Stone SA

“We have always been safety conscious but this makes us the bloody best. Everyone in the business should have to do Master of Stone Training.”

Tony Delpopolo
Director, CASA Marble NSW

“Thank you Caesarstone for providing us with such a great educational tool for our guys that we would not have been able to provide.”

Cole Albrecht
Director, Platinum Stone QLD

Other Caesarstone Health and Safety Initiatives

On August 9th 2021 Caesarstone launched their new Health & Safety Compliance program. An email was sent to all Caesarstone customers outlining the new customer account information required to ensure we meet our regulatory Health and Safety obligations as a supplier.

Our EHS team have been working with fabricators to assist meeting the August 30th deadline which has been extended to March 30th 2022. Over 1,100 compliance documents have been returned.

Thank you to those customers who promptly replied by sending through your documentation

For those existing Caesarstone Account holders please ensure that you return the documents circled in red in the next page. If for any reason you are unable to return the paperwork please contact Josephine Santos at Josephine.santos@caesarstone.com.au and she will be happy to assist.



Date: July 2021

Dear Valued Customer,

As you may know, according to the national OHS legislation from 2012 called "Model Workplace Health and Safety Act", both the owner/manager of the workplace and the supplier of the plant substance are obliged to meet different requirements to ensure the health and safety of any person in the workplace (Section 20(2) and 25(2)(b) of the said Act).

In July 2019 the Australian Government established the National Dust Disease Taskforce to develop a nationally consistent approach to prevention, early identification, controls, and management, of occupational disease related to respirable crystalline silica (RCS) dust within Australia. As a result, much research and consultation has been completed to identify solutions in addition to what is currently outlined in existing regulations.

In addition to the enhanced efforts by industry and government bodies, Caesarstone, as an industry leader worldwide, is continuously working towards achieving 'World Class' safety standards for our industry with the goal of making it a safe and healthy industry. As such, we are working to provide our customers with up-to-date comprehensive OHS informative materials and warnings regarding working in an RCS dust environment.

As part of our journey towards an industry united in preventing illness from hazardous RCS dust, we have been undergoing a comprehensive review of our EHS systems which led us to implement a 'Best Practice' approach to the supplier Duty of Care obligations.

This effectively means **for you**, as a Caesarstone's customer, that we require you to verify and provide to us certain information of your safe systems of work.

So, what do we require?

1. Evidence of Personal Injury Insurance (if Sole Trader) or Workers' Compensation Insurance (Certificate of Currency)
2. Signed receipt and acknowledgement form regarding information provided in the Good Practice Guide (Edition 3.1), Caesarstone's SDS and in the Fabrication & Installation Guide (Edition 6)
3. Company Registration (ABN and/or ACN) number
4. Registering with Caesarstone's Master of Stone online Knowledge Centre by contacting your Sales Representative.
5. Signed & Dated Customer EHS Compliance Agreement Form (CSA-EHS-031d).

All information provided will be held in confidence subject to each state and territory's privacy laws.

To assist in making this process as easy and streamlined as possible, your state manager will be available to answer any of your questions. Alternatively, our National EHS Manager, Kim Smith, can be reached on mobile number 0427 159 126 to address any of your questions, queries, or concerns.

With kind regards,

Kim Smith

National EHS Manager
Caesarstone Australia Pty Ltd

Please email all relevant documentation requested above to the EHS Team, josephine.santos@caesarstone.com.au

Queensland



WorkSafe.qld.gov.au

"Information pertaining to state specific data and information has been obtained either directly from a regulatory representative or from state specific regulatory websites to provide a customer with an updated on initiatives such as incentive programs"

Industry Update on Silicosis

On September 2021 Queensland Health published their annual report which included a "Notifiable Dust Lung Disease Register Annual Report". The report identifies the number of cases of notifiable lung diseases recorded in the register in the years 2019 to 2020 and 2020 to 2021. The information for 2020 to 2021 is not complete (meaning not all data was available for this period before the report was produced).

Notifiable Dust Lung Diseases

The dust diseases are identified on page 3 of the report, notes that a significant 24% or 59 notifications relate to silicosis. The report does not have any correlation with compensation claims or filings.

Queensland Health viewed the below table as highlighting the most pertinent information, identifying total silicosis cases in Queensland and number of new diagnoses in 2019-2020 and 2020-2021:

Type of notifiable dust lung disease	Year of diagnosis			
	Legacy	2019-20	2020-21 (Incomplete year)	Total (%)
Cancer - Mesothelioma	116	71	42	229 (25%)
Cancer - Other	30	15	8	53 (6%)
COPD - Chronic bronchitis / Emphysema	17	23	12	52 (6%)
COPD - Other	45	18	7	70 (8%)
Pneumoconiosis - Coal Workers	36	8	7	51 (6%)
Pneumoconiosis - Mixed Dust	18	7	10	35 (6%)
Pneumoconiosis - Silicosis	191	68	49	308 (33%)
Pneumoconiosis - Asbestosis	45	47	17	109 (12%)
Pneumoconiosis - Other	5	7	6	18 (2%)
Totals	503	264	158	925 (100%)

The below table sets out the industry of exposure of workers with new silicosis. "Manufacturing" accounts for 41%, but there is a significant contribution from "construction and mining" (silica is also found in coal dust).

Industry of exposure	Number of workers	(%)
Mining, Resources and Quarrying	20	(34%)
Manufacturing	24	(41%)
Construction	12	(20%)
Other	3	(5%)
Total	59	(100%)

The below table also contains relevant information and particularly noting an increase in chronic silicosis diagnoses between 2019 and 2020.

Type of silicosis	Year of diagnosis			
	Legacy	2019-20	2020-21 (Incomplete year)	Total (%)
Silicosis (Acute)	2	0	1	3 (1%)
Silicosis (Accelerated)	15	7	1	23 (7%)
Silicosis (Chronic)	39	19	24	82 (27%)
Silicosis (Type not reported)	135	42	23	200 (8%)
Totals	191	68	49	308 (100%)

Licensing Updates

As of July 2021, changes were made to the process for replacing your general construction induction training cards (previously known as the 'white card'). Further instructions on replacing your general construction induction training card can be found following the below link.

<https://www.worksafe.qld.gov.au/news-and-events/newsletters/esafe-newsletters/esafe-editions/esafe-construction/july-2021/replacing-general-construction-induction-training-cards>

DID YOU KNOW?

When registering your business in QLD the Workcover Industry Code (WIC) for your Workers compensation insurance is

209013

Crystalline Silica Screening Services for Regional Queensland

Heart of Australia Corporate Health Initiative (HOACHI) offers state-of-the-art respiratory health surveillance services to organisations in regional, rural and remote Australia. HOACHI's respiratory health surveillance programs for crystalline silica include review of occupational history, a respiratory questionnaire, spirometry, an ILO Chest X-ray and a physical examination with an emphasis on the respiratory system.

For workers identified with abnormal findings during the baseline respiratory health surveillance, HOACHI also has the capacity to provide laboratory lung function testing, high resolution computed tomography (HRCT) and respiratory specialist reviews to confirm or exclude a dust related lung disease.

HOACHI's spirometry and radiology services are accredited by Quality Innovation Performance (QIP),

ensuring the highest quality respiratory testing standards for workers operating across a range of sectors. HOACHI's examining and supervising physicians are registered as approved providers with Resources, Safety and Health Queensland (RSHQ) and we have senior physicians from radiology, occupational and respiratory specialities with extensive experience in dust related lung diseases to support our programs.



For more information on mobile screening services available to improve your workplace health programs please contact Heart of Australia on info@hoachi.com. Or by calling (07) 31625310.

Source: <https://www.worksafe.qld.gov.au/>

Victoria will become the first state or territory in Australia to launch a licensing scheme to protect construction workers from exposure to deadly silica dust particles.

Four workers have died from silica-related illnesses so far this year and 59 claims have been accepted by WorkSafe.

Exposure to silica dust particles can lead to deadly lung and respiratory diseases, including silicosis.

Tradies who work with engineered stone, used to make bench tops, are particularly at risk of inhaling the dust.

Regulation Updates

The Minister for Workplace Safety, Ingrid Stitt MP, has now approved the Occupational Health and Safety Amendment (Crystalline Silica) Regulations 2021 which will come into effect Monday 15 November 2021.

The Regulations will replace the Occupational Health and Safety Amendment (Crystalline Silica) Interim Regulations 2021.

The Regulations will strengthen the regulatory regime to better protect workers from exposure to respirable crystalline silica by:

- Introducing Australia's first licensing regime for engineered stone, including increased manufacturer and supplier duties;
- making permanent Victoria's prohibition on uncontrolled dry-cutting of engineered stone; and

Under changes to Occupational Health and Safety Regulations announced on Monday, employers working with engineered stone will be required to prove compliance with safety measures and obtain a licence by November 2022.

After that date, manufacturers and suppliers will only supply engineered stone to licence holders and failure to obtain a licence could be used as evidence in proceedings against an employer.

Workplace Safety Minister Ingrid Stitt said the scheme would ensure those working with products that emit silica dust "have the necessary safety protections".

- adding additional regulatory oversight of high risk crystalline silica work outside of engineered stone across all industries, including the construction and earth resources industries.

Commencement of the Regulations will be a phased approach to ensure duty holders are provided with enough time to ensure they are prepared for the relevant changes to their duties and obligations.

From Monday 15 November 2021, the 12 month transition period for the licensing regime will commence along with the commencement of specific controls to be used when working with engineered stone, including the continued prohibition on dry-cutting.



"Information pertaining state specific data and information has been obtained either directly from a regulatory representative or from state specific regulatory websites to provide a customers with an updated on initiatives such as incentive programs"

Employers must also inform job applicants about the health risks associated with exposure to silica and ensure workers are trained about the risks. Auditing and compliance checks will be used to enforce the new scheme.

As part of the changes, the state government will make a ban on uncontrolled processing of engineered stone permanent. An oversight of high-risk crystalline silica work across all industries, including construction and earth resources, will also come into effect from May 2022.

From Sunday 15 May 2022, the commencement of high risk silica work reform and the commencement of manufacturer and supplier duties will begin, and from Tuesday 15 November 2022, all businesses working with engineered stone must hold a licence and suppliers cannot supply engineered stone to businesses who require a licence but do not have one.

Duty holders can now apply for and manage a digital licence via myWorkSafe.

For more information, visit [worksafe.vic.gov.au/engineered-stone-licence](https://www.worksafe.vic.gov.au/engineered-stone-licence).

Statistics

Since January 2021, WorkSafe has made 491 silica-related visits to workplaces and issued 199 compliance notices.

Key changes to current Duty holders and their responsibilities

- Fabricators will be required to upload a Control Plan & apply online. The OHS Essentials program can assist with the development of essential OHS planning <https://www.worksafe.vic.gov.au/ohs-essentials-program>
- Plans being considered for annual site visits by Safe work.
- Licensed fabricators will be listed online – real time
- Inspection for all new businesses

Engineered Stone Control Plans

What is an ESCP?

An ESCP is a document that identifies the hazards and risks associated with engineered stone processes undertaken at a workplace that generates crystalline silica dust, and the control measures necessary to manage those risks. The ESCP should describe in clear terms how risks from the work will be effectively controlled to enable the work to be done safely.

Please see below link for further information on Engineered Stone Control Plans

<https://www.worksafe.vic.gov.au/resources/engineered-stone-control-plans-escp>

DID YOU KNOW?

When registering your business in VIC the Workcover Industry Code (WIC) for your Workers compensation insurance is

C20900

Lung Screening Resources

The Alfred Occupational Respiratory Clinic is a free health assessment for eligible workers in the stonemason industry; therefore, there is assistance for health monitoring costs.

The below link explains who is eligible -

<https://www.worksafe.vic.gov.au/criteria-referral-alfred-occupational-respiratory-clinic>

Worksafe Victoria OHS Industry Grants and Services

WorkSafe Victoria's OHS Essentials is a free workplace safety consultation service, delivered by independent occupational health and safety (OHS) experts.

The service is a great way to receive free, independent, and personalised advice to manage safety at your workplace – <https://www.worksafe.vic.gov.au/ohs-essentials-program>

Source: <https://www.worksafe.vic.gov.au/>

“Information pertaining state specific data and information has been obtained either directly from a regulatory representative or from state specific regulatory websites to provide a customers with an updated on initiatives such as incentive programs”

In 2021 NSW government conducted a case finding study into Respirable Crystalline Silica exposure in the NSW Manufactured Stone Industry. The study was commissioned by Safework NSW and covered cases of silicosis from the 4 years prior.

The aim of the study was to provide “insight into the burden of silica-related disease in the manufactured stone industry from 2017- 2020”.

The study was conducted using information provided by SafeWork NSW, icare NSW and NSW Health.

Key findings from the case finding study included:

- In the five years before the reporting period, there was an average of 8.7 silicosis cases each year in NSW across all occupations and industries.
- During the three-year reporting period, icare NSW screened 3,030 workers for silica exposure, including 696 workers from the manufactured stone industry. Among the 696 manufactured stone industry workers, 88 were diagnosed with silicosis (an average of 29 cases each year from the manufactured stone industry).
- Of the 88 manufactured stone workers diagnosed with silicosis, 63 (72%) had chronic simple silicosis and 25 (28%) had chronic complicated, acute, or accelerated silicosis.
- Seventy-seven percent of manufactured stone workers with silicosis had a disability level (lung function loss) of 1%; which suggests that they had no or minimal silicosis symptoms at the time of diagnosis. In the remaining 23% of cases, the disability level was between 5% and 40%.
- The majority of manufactured stone industry workers with silicosis were stonemasons (70%), followed by installers (15%). Machine operators (7%) and workplace managers (7%) were also among the manufactured stone workers diagnosed with silicosis.⁶ The study noted that annual case numbers were relatively stable from 2012- 13 to 2017-18 (Figure 1).⁷ The subsequent increase in silicosis cases during 2018-19 and 2019-20 was attributed to:
- The commencement of targeted workplace inspections by SafeWork NSW in March 2018, as part of a five-year strategy aimed at the manufactured stone industry.
- The increased use of medical screening services and routine CT scans in 2018 to improve the detection of silicosis in workers exposed to high levels of respirable crystalline silica.

SafeWork NSW Key Activities

- Research and successful testing of a [Real-time silica dust detection device](#) launch has been completed with in-field testing underway ahead of a commercial product becoming available.
- NSW version of national Clean Air, Clear Lungs campaign being delivered during September, October and November 2021
- In language information on Silica is available at [Translated Resources](#) launch
- Video safety alert – [Crystalline Silica Dust Safety](#) launch
- Delivery of the first [NSW Dust Disease Register Annual Report 2020-21 \(PDF, 1.42 MB\)](#)
- Delivery of the [Case Finding Study Report - Respirable crystalline silica exposure in the NSW manufactured stone industry \(2017-2020\) \(PDF, 1.66 MB\)](#)
- Launch of the [NSW Dust Strategy 2020-2022](#)

Workplace visits (since 2018)

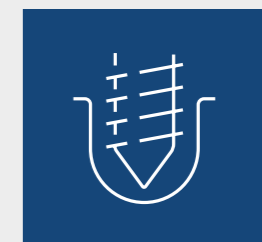
The following information relates to SafeWork NSW's silica workplace visit program which commenced in 2018 and runs until 2022. Data is from 2018 to 30 September 2021



1530
Workplace visits
Silica-related

874 Manufactured stone visits

566 Construction workplace visits



90
includes tunnelling manufacturing, foundries and stonemasons

Notices

Notices



953
Improvement notices

41
Prohibition notices
Issued for uncontrolled exposure to silica dust

2
On the spot fines
Issued for uncontrolled dry cutting

37
Exposure standard not met*
Notices where control measures not confirmed as meeting 0.05mg/m³

- Manufactured stone = 25
- Construction = 12

Cases identified

Silicosis cases



Quarter 1 2021-2022

(1 July 2021 - 30 September 2021)

- 8 cases (two diagnosed prior to the 2021-22 reporting period)*
- 2 deaths

*Due to data privacy principles, analysis of case data in 2021-22 will be published when a greater volume of data is available.

**57 cases
and 7
deaths**

2020-21

[NSW Dust Disease Register Annual Report \(2020-21\)](#)
(PDF 1.42 MB)

107

2019-20

Prior to commencement of the NSW Dust Disease Register (data derived from icare)

40

2018-19

Prior to commencement of the NSW Dust Disease Register (data derived from icare)

09

2017-18

Prior to commencement of the NSW Dust Disease Register (data derived from icare)

An Important Note from SafeWork NSW

Action taken on uncontrolled cutting, grinding or drilling of silica products or materials

From 1 July 2020:

- the workplace exposure standard (WES) for silica has been reduced to 0.05mg/m³ (eight-hour time-weighted average)
- on-the-spot fines apply for uncontrolled cutting, grinding, drilling and polishing of manufactured stone
- silicosis became a notifiable condition by all medical practitioners to NSW Health
- on-the-spot fines apply for PCBUs failing to notify SafeWork NSW of an [adverse health monitoring report](#)

Uncontrolled cutting, grinding, or drilling of products or materials containing crystalline silica can generate hazardous levels of airborne dust. Breathing in this dust, usually over several years, can lead to serious and fatal lung diseases such as silicosis.

You must use water, dust extraction systems on portable tools, or adopt other methods that eliminate or minimise the generation of silica dust. Inspectors can issue prohibition notices to stop you from doing work that generates high levels of silica dust. If you don't comply with a prohibition notice, PCBUs (employers) can face penalties up to \$100,000.

If you are a fabricator or installer of manufactured stone products e.g. kitchen benchtops you must:

- use saws, grinders, and polishers with an integrated water supply to minimise the amount of dust generated
- ensure workers wear half face piece reusable or disposable respirators as a minimum, that comply with the Australian Standard 1716:2012 Respiratory Protective Devices
- use on-tool dust capture shrouds or water to control dust generated during any work required during on site installation.

Failure to use these controls for fabricating or installing manufactured stone can result in an on the spot fine of \$3,600.

SafeWork NSW Update

Small Business Rebates –

Safework NSW recently conducted a review of the \$500 small business rebate available for those small businesses and sole traders who want to purchase equipment to make their workplaces safer. The great news is that as of February 4, 2022, that rebate has increased to \$1000. The rebate is available to small businesses who have not already received the rebate in the past five years.

For more information on eligibility and how to claim your \$1000 rebate visit <https://www.nsw.gov.au/grants-and-funding/1000-safework-small-business-rebate>

Code of Practice Launch –

Safework NSW will soon launch the Code of Practice for Managing the Risks of Respirable Crystalline Silica from Engineered Stone in the Workplace. To promote the introduction of the COP Safework will be conducting a webinar on March 28, 2022. Further details on the webinar's registration process will be communicated in the coming weeks.

Up and Coming Caesarstone Events

During the April 11-14 Caesarstone will partnering with icare to offer **FREE** lung screening for fabricators across NSW. This program will be our pilot program and hopefully move to making it a regular event.

The icare lung bus will located at our Moorebank location for 4 days we currently have limited spaces available, at this stage we can accommodate approximately 25 participants per day.

Appointment times start from Screening starts at 7am with the last appointment time being 4pm. Each scan will take 15 minutes.

All test results will be confidential, and results will be sent to the patient via icare.

If you would like to participate or nominate your workers (even if they have been previously tested) please contact Josephine Santos at Josephine.santos@caesarstone.com.au to book your appointment and submit the necessary paperwork.

The earlier you return your paperwork to Josephine the better chance of securing the preferred time slots.

Source: <https://www.safework.nsw.gov.au/>

**DID YOU
KNOW?**

**When registering your
business in NSW the
Workcover Industry
Code (WIC) for your
Workers compensation
insurance is**

264020



South Australia



"Information pertaining state specific data and information has been obtained either directly from a regulatory representative or from state specific regulatory websites to provide a customers with an updated on initiatives such as incentive programs"

As a result of the 2018 Workplace Exposure Standards Review conducted by Safe Work Australia, South Australia has adopted the National Workplace Exposure Standards for silica dust. Effective July 1, 2020. This means that your workers must not be exposed to levels of silica dust greater than 0.05 mg/m³ over an eight hour working day, for a five day working week.

For more information and resources and support related to Crystalline Silica and Silicosis please visit the below active sites:

<https://bit.ly/crystalline-silica-and-silicosis>

<https://bit.ly/silicosis-support>

In August 2021 Return to Work SA published a Silicosis "Health Screening in your workplace" postcard available for download and display in all workplaces where silica dust poses a hazard.

The information postcard can be downloaded for display by following the below link.

<https://bit.ly/-health-screening>

Western Australia



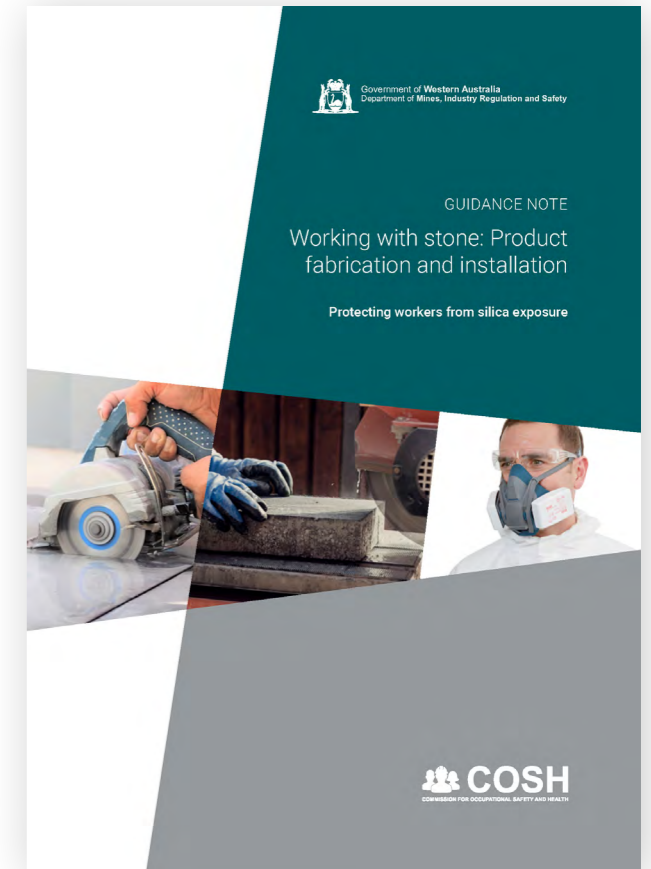
"Information pertaining state specific data and information has been obtained either directly from a regulatory representative or from state specific regulatory websites to provide a customers with an updated on initiatives such as incentive programs"

Guidance Material for Safely working with engineered Stone

In 2021, the government of Western Australia Department of Mines, Industry Regulations and Safety published a document that provides guidance for a number of health and safety matters for those who work with stone.

The Guidance material can be found at the below link.

[211094 gn workingwithstone web.pdf](#)



Silicosis Early Detection Scanning Update

On April 15, 2021, amendments to the Occupational Safety and Health Regulations 1996, relating to health surveillance for workers exposed to respirable crystalline silica will come into effect.

The amendments will require employers to provide a low-dose HRCT scan, supervised by an appointed medical practitioner, instead of the previously required chest X-ray.

Free Screening Program

The institute for Respiratory Health in WA offer a **FREE** screening program for those workers in the artificial stone industry. You can either go online and register for a free screening <https://bit.ly/free-screening-for-benchtop-workers> or contact the centre on 1800512456 to make an appointment.

Further information pertaining to Support and resources for Stone benchtop fabrication and installation workers can be found by accessing the below links.

<https://bit.ly/wa-worksafe-silica>
<https://bit.ly/stone-benchtop-fabrication-and-installation-checklist>

Silicosis health screening in your workplace



Feeling worried or anxious?

We understand that being tested for silicosis may make you worried or anxious about what this means for you and your family. We're here to support you.

Free and confidential counselling is available to you, your family and your workplace through our Employee Assistance Program providers.

To book an appointment:

Access Programs
Call 08 8215 6799 or 1300 66 77 00
Monday to Friday 9am to 5pm

Corporate Health Group
Call 08 8354 9800
Monday to Friday 8am to 5pm

Return to *work*.
Return to *life*.

Public-13- A3



Source: <https://www.rtwsa.com/>

Source: <https://www.commerce.wa.gov.au/worksafe>

caesarstone®

MASTER
OF STONE

SILICOSIS
IS ENTIRELY
PREVENTABLE
WHEN THE
APPROPRIATE
SAFETY CONTROLS
ARE IN PLACE.

